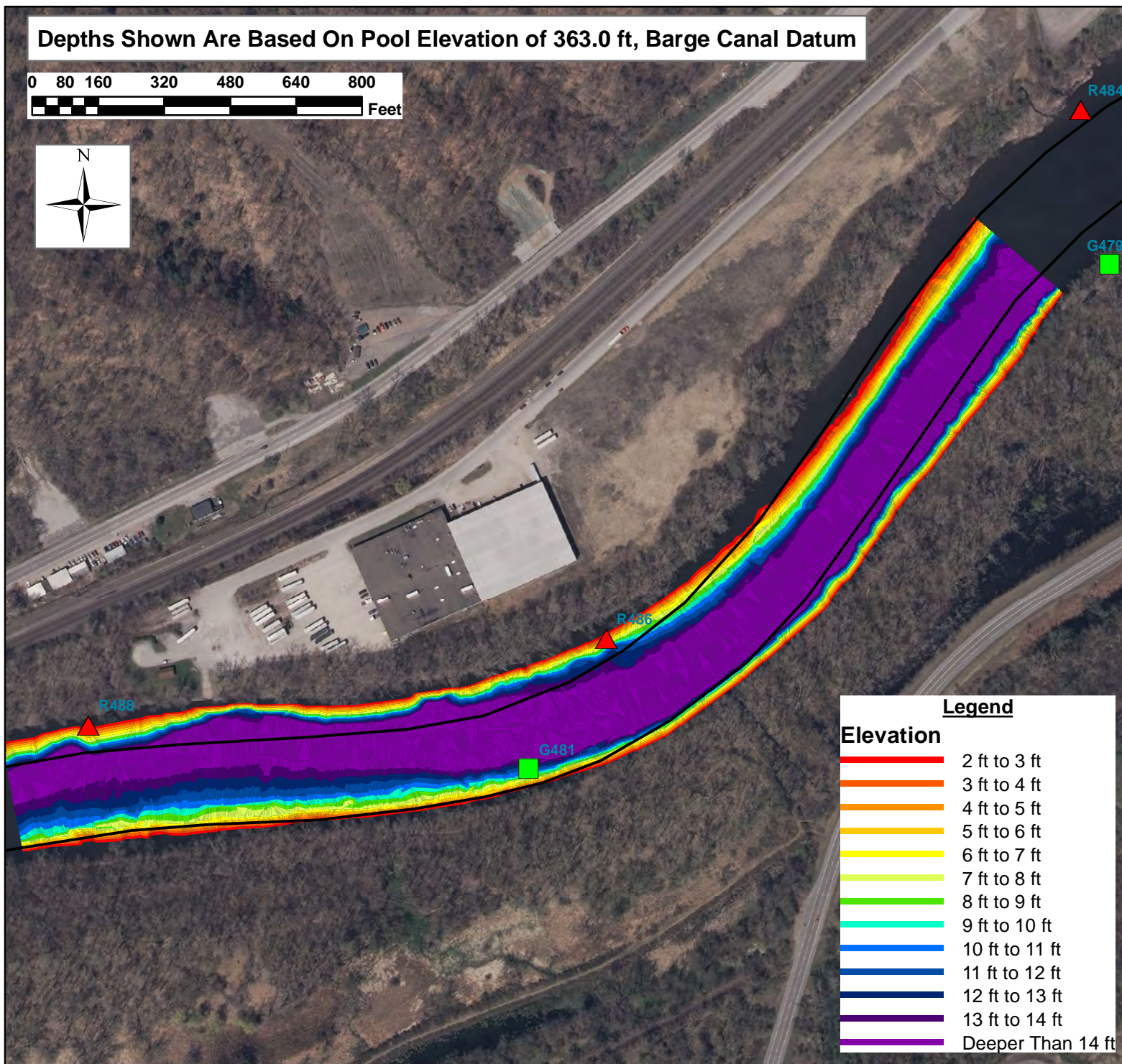


Depths Shown Are Based On Pool Elevation of 363.0 ft, Barge Canal Datum

0 80 160 320 480 640 800  
Feet



Legend	
Elevation	
2 ft to 3 ft	
3 ft to 4 ft	
4 ft to 5 ft	
5 ft to 6 ft	
6 ft to 7 ft	
7 ft to 8 ft	
8 ft to 9 ft	
9 ft to 10 ft	
10 ft to 11 ft	
11 ft to 12 ft	
12 ft to 13 ft	
13 ft to 14 ft	
Deeper Than 14 ft	

Date of Survey: May 8, 2013

Pool Elevation On Survey Date: 363.4 ft, Barge Canal Datum

Location of Pool Elevation Measurement: Lock E-18

Data Collected By: Peter J Pazer, NYSCC-Syracuse Division

Map Prepared By: Peter J Pazer, NYSCC-Syracuse Division



**Buoy R488 to Buoy G479, 1.9 Miles West of Lock E-17, Little Falls, NY, Herkimer County  
W 74.878, N 43.026 - Erie Canal**