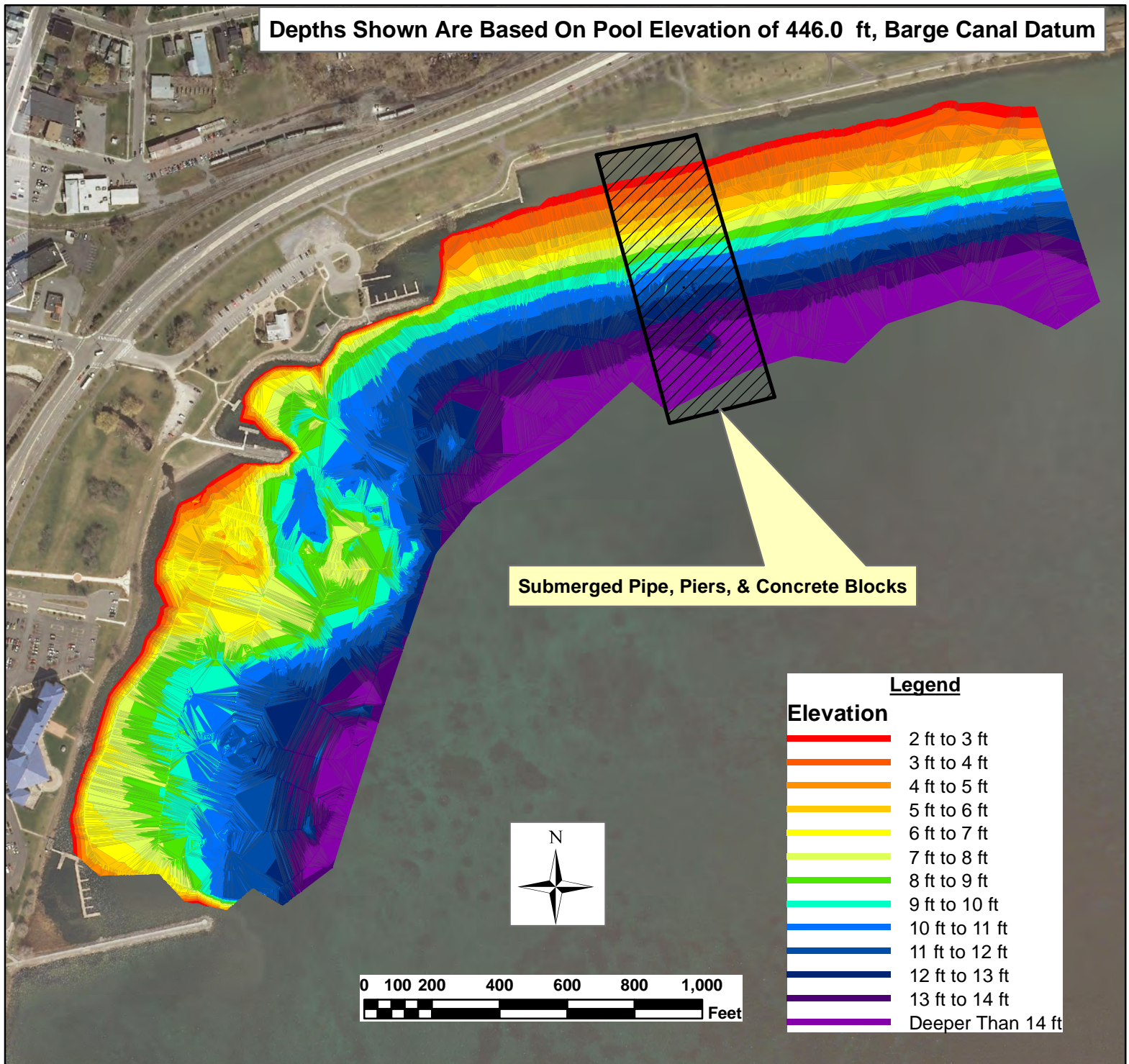


Depths Shown Are Based On Pool Elevation of 446.0 ft, Barge Canal Datum



Date of Survey: May 12, 2014

Pool Elevation On Survey Date: 446.25 ft, Barge Canal Datum

Location of Pool Elevation Measurement: Seneca Lake State Park, Geneva

Data Collected By: Peter J Pazer, NYSCC-Western Division & Kelly Key, NYSCC-Western Division, Lyons Section

Map Prepared By: Peter J Pazer, NYSCC-Western Division



**Seneca Lake Northwest Shore - Geneva, NY, Seneca County**  
**W 76.974, N 42.870 - Seneca Lake**